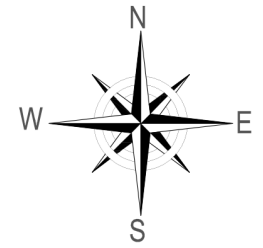
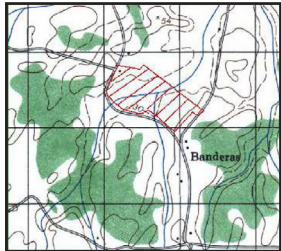
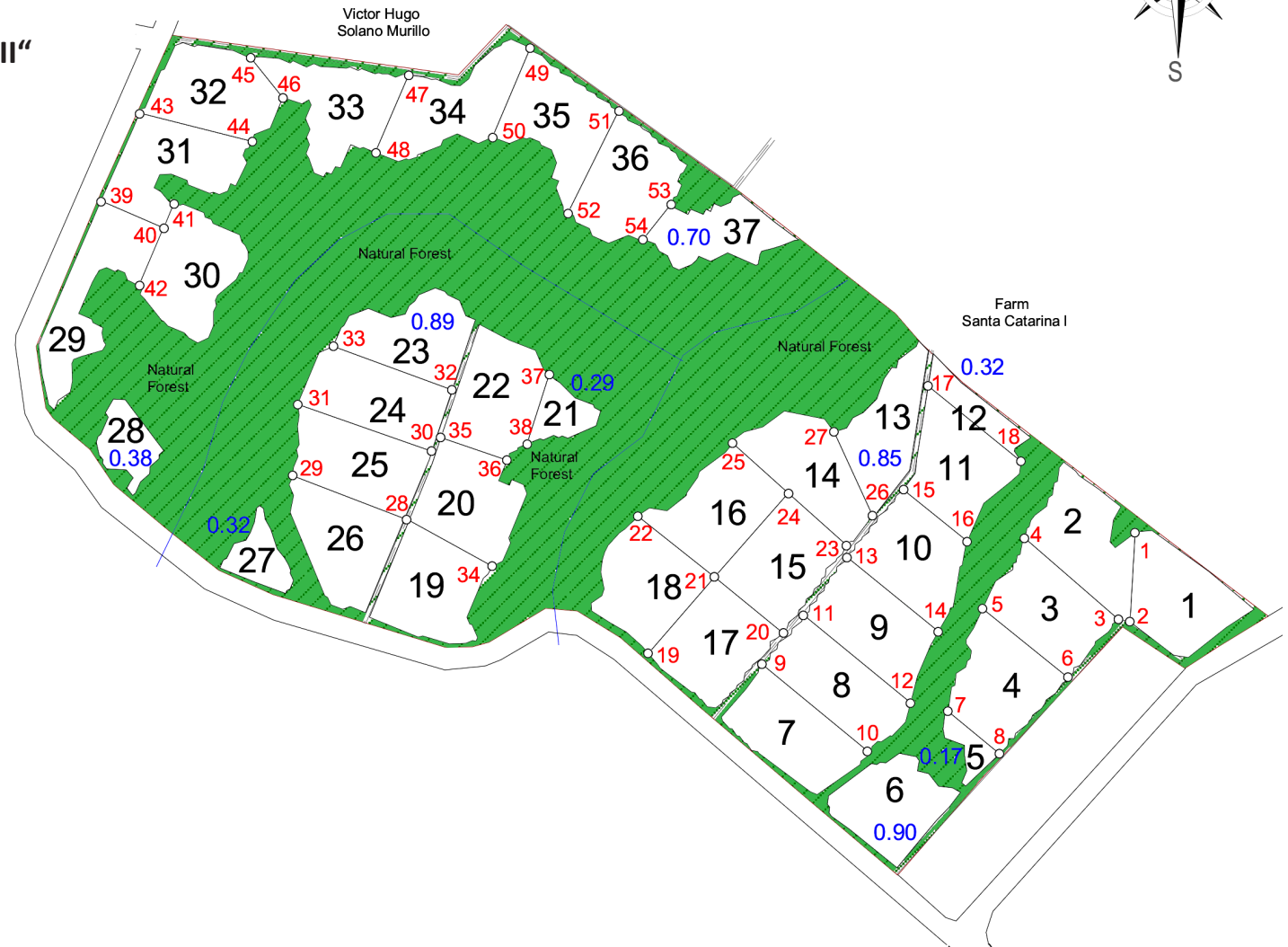




LIFE FORESTRY GROUP®



PROYECTO FORESTAL „SANTA CATARINA II“
Provincia Alajuela,
San Carlos, Costa Rica



CARTOGRAPHIC UBICATION

Legende	
	Teakfläche 32,82 ha
	Biotope und Schutzzonen 26,16 ha
	Strassen und Wege
	Seen und Wasserläufe
GESAMTFLÄCHE 58,98 ha	

NAME SANTA CATARINA II	PROVINZ ALAJUELA	GRÖSSE 58,98HA	TOPOGRAPH ERIC ROBERTO QUIROS
EIGENTÜMER LIFE FORESTRY COSTA RICA S.A.	KANTON SAN CARLOS	MASSTAB 1:7.000	PFLANZJAHR 2003
AUFTRAG LEVANTAMIENTO PLANIMETRICO	GEMEINDE POCOSOL	DATUM 05-2014	PLANO A-597178-1999





LIFE FORESTRY GROUP®

VERTICES DE LOS LOTES

DATUM WGS84 (GRADOS MINUTOS Y SEGUNDOS)

FINCA SANTA CATARINA II · CANTON SAN CARLOS · PROVINCIA ALAJUELA · COSTA RICA

Nr	LONGITUD (W)	LATITUD (N)	Nr	LONGITUD (W)	LATITUD (N)	Nr	LONGITUD (W)	LATITUD (N)
1	W84°28'0.6954"	N10°50'57.876"	19	W84°28'17.4714"	N10°50'53.7354"	37	W84°28'20.8554"	N10°51'3.2394"
2	W84°28'0.8754"	N10°50'54.852"	20	W84°28'12.7914"	N10°50'54.4194"	38	W84°28'21.6474"	N10°51'0.8634"
3	W84°28'1.272"	N10°50'54.9234"	21	W84°28'15.1674"	N10°50'56.364"	39	W84°28'36.3354"	N10°51'9.1434"
4	W84°28'4.512"	N10°50'57.6594"	22	W84°28'17.832"	N10°50'58.416"	40	W84°28'34.1754"	N10°51'8.2434"
5	W84°28'5.952"	N10°50'55.2834"	23	W84°28'10.632"	N10°50'57.408"	41	W84°28'33.816"	N10°51'9.072"
6	W84°28'3"	N10°50'52.9434"	24	W84°28'12.6474"	N10°50'59.208"	42	W84°28'35.0034"	N10°51'6.2634"
7	W84°28'7.1394"	N10°50'51.792"	25	W84°28'14.5554"	N10°51'0.9"	43	W84°28'35.0034"	N10°51'12.1314"
8	W84°28'5.3394"	N10°50'50.3514"	26	W84°28'9.7314"	N10°50'58.4514"	44	W84°28'31.1154"	N10°51'11.1594"
9	W84°28'13.5474"	N10°50'53.376"	27	W84°28'11.064"	N10°51'1.296"	45	W84°28'31.1874"	N10°51'14.0394"
10	W84°28'9.9114"	N10°50'50.424"	28	W84°28'25.788"	N10°50'58.3074"	46	W84°28'30.0354"	N10°51'12.6714"
11	W84°28'12.1074"	N10°50'55.032"	29	W84°28'29.7114"	N10°50'59.784"	47	W84°28'25.716"	N10°51'13.428"
12	W84°28'8.4354"	N10°50'52.0434"	30	W84°28'24.924"	N10°51'0.612"	48	W84°28'26.868"	N10°51'10.7994"
13	W84°28'10.596"	N10°50'57.012"	31	W84°28'29.5314"	N10°51'2.2314"	49	W84°28'21.54"	N10°51'14.3634"
14	W84°28'7.4634"	N10°50'54.492"	32	W84°28'24.2034"	N10°51'2.6994"	50	W84°28'22.836"	N10°51'11.3394"
15	W84°28'8.688"	N10°50'59.3154"	33	W84°28'28.308"	N10°51'4.2114"	51	W84°28'18.48"	N10°51'12.24"
16	W84°28'6.4554"	N10°50'57.552"	34	W84°28'22.836"	N10°50'56.724"	52	W84°28'20.244"	N10°51'8.748"
17	W84°28'7.824"	N10°51'2.8434"	35	W84°28'24.6"	N10°51'1.08"	53	W84°28'16.6794"	N10°51'9.072"
18	W84°28'4.62"	N10°51'0.288"	36	W84°28'22.332"	N10°51'0.3234"	54	W84°28'17.6514"	N10°51'7.848"