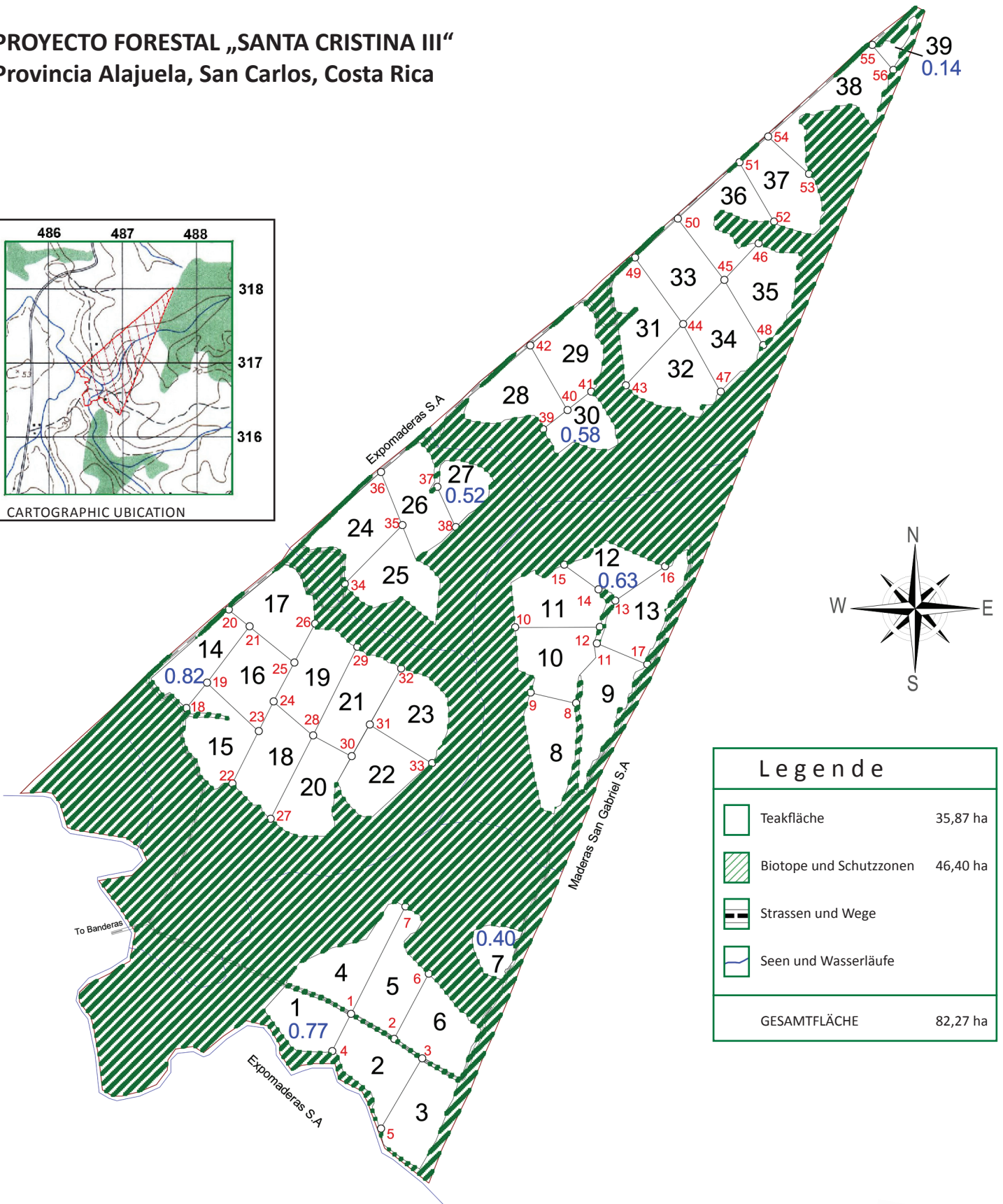
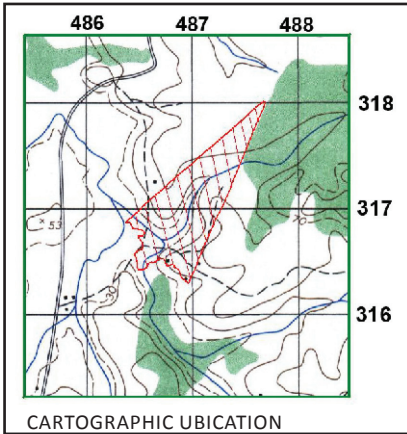




**PROYECTO FORESTAL „SANTA CRISTINA III“**  
**Provincia Alajuela, San Carlos, Costa Rica**



Legende	
	Teakfläche 35,87 ha
	Biotope und Schutzzone 46,40 ha
	Strassen und Wege
	Seen und Wasserläufe
GESAMTFLÄCHE 82,27 ha	

NAME SANTA CRISTINA III	PROVINZ ALAJUELA	GRÖSSE 82,27HA	TOPOGRAPH ERIC ROBERTO QUIROS IT-24529
EIGENTÜMER LIFE FORESTRY COSTA RICA S.A.	KANTON SAN CARLOS	MASSTAB 1:5.000	
AUFTRAG LEVANTAMIENTO PLANIMETRICO	GEMEINDE POCOSOL	DATUM 08-2013	PLANO A-617152-2000





## Teak Plantation „SANTA CRISTINA III“

VERTICES DE LOS POLIGONOS  
DATUM WGS84 (GRADOS MINUTOS Y SEGUNDOS, DECIMALES)

Pto	Longitud	Latitud	Pto	Longitud	Latitud
1	W84°27'6.0474"	N10°52'10.7754"	29	W84°27'5.7594"	N10°52'28.308"
2	W84°27'3.9594"	N10°52'9.5874"	30	W84°27'6.0114"	N10°52'23.0874"
3	W84°27'2.6274"	N10°52'8.652"	31	W84°27'5.148"	N10°52'24.5994"
4	W84°27'6.948"	N10°52'9.012"	32	W84°27'3.6354"	N10°52'27.264"
5	W84°27'4.6074"	N10°52'5.304"	33	W84°27'2.1594"	N10°52'22.7634"
6	W84°27'2.304"	N10°52'12.72"	34	W84°27'6.3714"	N10°52'31.296"
7	W84°27'3.4554"	N10°52'15.924"	35	W84°27'3.5994"	N10°52'34.1034"
8	W84°26'55.176"	N10°52'25.608"	36	W84°27'4.6074"	N10°52'36.6594"
9	W84°26'57.3714"	N10°52'26.112"	37	W84°27'1.908"	N10°52'35.9394"
10	W84°26'58.1274"	N10°52'29.244"	38	W84°27'1.008"	N10°52'33.996"
11	W84°26'54.204"	N10°52'28.4874"	39	W84°26'56.796"	N10°52'38.712"
12	W84°26'54.06"	N10°52'29.244"	40	W84°26'55.6074"	N10°52'39.612"
13	W84°26'53.3034"	N10°52'30.504"	41	W84°26'54.4554"	N10°52'40.5114"
14	W84°26'54.0954"	N10°52'31.0434"	42	W84°26'57.408"	N10°52'42.7074"
15	W84°26'55.788"	N10°52'32.2314"	43	W84°26'52.7994"	N10°52'40.8"
16	W84°26'50.8914"	N10°52'32.16"	44	W84°26'50.028"	N10°52'43.7154"
17	W84°26'51.756"	N10°52'27.4794"	45	W84°26'48.048"	N10°52'45.84"
18	W84°27'14.04"	N10°52'25.356"	46	W84°26'46.3914"	N10°52'47.5674"
19	W84°27'12.9954"	N10°52'26.58"	47	W84°26'48.228"	N10°52'40.5114"
20	W84°27'11.9874"	N10°52'30.0714"	48	W84°26'46.176"	N10°52'42.7434"
21	W84°27'10.944"	N10°52'29.28"	49	W84°26'52.3674"	N10°52'46.9194"
22	W84°27'11.772"	N10°52'21.7914"	50	W84°26'50.2794"	N10°52'48.7554"
23	W84°27'10.512"	N10°52'24.2754"	51	W84°26'47.292"	N10°52'51.4554"
24	W84°27'9.7914"	N10°52'25.6794"	52	W84°26'45.636"	N10°52'48.6114"
25	W84°27'8.7834"	N10°52'27.552"	53	W84°26'43.9434"	N10°52'50.916"
26	W84°27'7.776"	N10°52'29.3874"	54	W84°26'45.9234"	N10°52'52.6794"
27	W84°27'9.9354"	N10°52'20.0994"	55	W84°26'40.8834"	N10°52'57.0354"
28	W84°27'7.884"	N10°52'24.0954"	56	W84°26'39.876"	N10°52'55.8474"